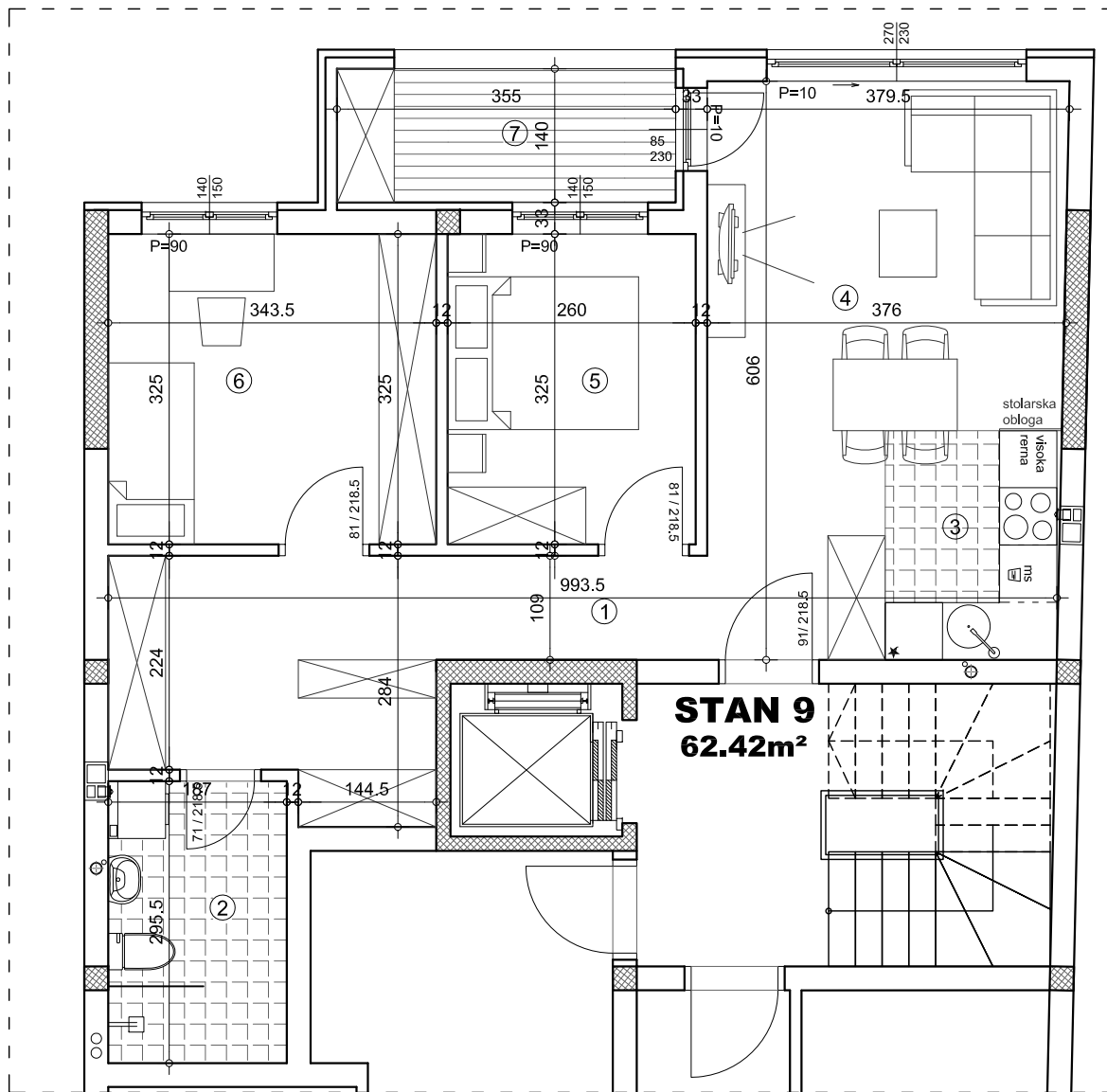


**OSNOVA STANA 1:75**



STAN 9 - trosoban		
prostorija	pod	površina
1 ULAZ/HODNIK	parket	13.69 m <sup>2</sup>
2 KUPATILO	ker.pl.	5.52 m <sup>2</sup>
3 KUHINJA	ker.pl.	4.38 m <sup>2</sup>
4 DNEVNA SOBA	parket	16.19 m <sup>2</sup>
5 SOBA	parket	8.44 m <sup>2</sup>
6 SOBA	parket	11.16 m <sup>2</sup>
7 TERASA	ker.pl.	4.96 m <sup>2</sup>
UKUPNO:		64.35 m <sup>2</sup>
UKUPNO REDUKOVANO -3%:		62.42 m <sup>2</sup>

**OSNOVA 3.SPRATA**

dvorište

ulica

